

THT Ferrite Beads

CJFB series

SPECIFICATIONS

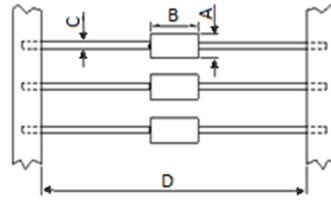
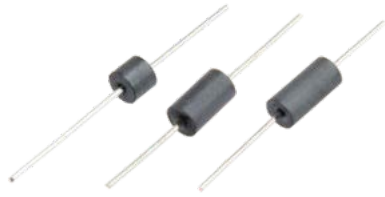


Figure.1
CJFB type

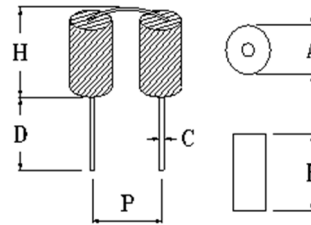


Figure.2
*CJFB type

No	Part No.	Impedance (Ω)		Dimensions (mm)						Figure
		25MHz	100MHz	A	B	C	D	H	P	
1	*CJFB 2.5×3.0×0.8	15	30	2.5 ± 0.15	3.0 ± 0.30	0.68 Max	52.0 ± 2.00			1
2	*CJFB 3.5×3.0×0.8	30	50	3.5 ± 0.15	3.0 ± 0.30	0.68 Max	52.0 ± 2.00			1
3	CJFB 3.5×4.5×0.8	30	60	3.5 ± 0.15	4.5 ± 0.30	0.68 Max	52.0 ± 2.00			1
4	CJFB 3.5×4.7×0.8	35	60	3.5 ± 0.15	4.7 ± 0.30	0.68 Max	52.0 ± 2.00			1
5	*CJFB 3.5×5.0×0.8	35	60	3.5 ± 0.15	5.0 ± 0.30	0.68 Max	52.0 ± 2.00			1
6	CJFB 3.5×6.0×0.8	50	75	3.5 ± 0.15	6.0 ± 0.30	0.68 Max	52.0 ± 2.00			1
7	*CJFB 3.5×7.5×0.8	60	90	3.5 ± 0.15	7.5 ± 0.30	0.68 Max	52.0 ± 2.00			1
8	*CJFB 3.5×8.0×0.8	60	100	3.5 ± 0.15	8.0 ± 0.30	0.68 Max	52.0 ± 2.00			1
9	CJFB 3.5×9.0×0.8	60	100	3.5 ± 0.15	9.0 ± 0.30	0.68 Max	52.0 ± 2.00			1
10	CJFB 3.5×6.0×0.8	90	150	3.5 ± 0.2	6.0 ± 0.30	0.60 ± 0.05	23.5 ± 1.00	7.50 Max.	5.00 ± 0.50	2
11	CJFB 3.5×4.7×0.8	75	135	3.5 ± 0.2	4.7 ± 0.30	0.60 ± 0.05	4.0 ± 0.50	7.50 Max.	5.00 ± 0.50	2

* Special items. Need to contact COILTEX for special production.

FEATURES

- Suitable for applications with higher current.
- High mechanical body.

STANDARD PACKAGE QUANTITY (SPQ)

Type	CJFB	*Type	*CJFB
Q'TY/Reel	5,000	Q'TY/PE Bag	1,000
Q'TY/Box	1,000	Q'TY/Box	4,000