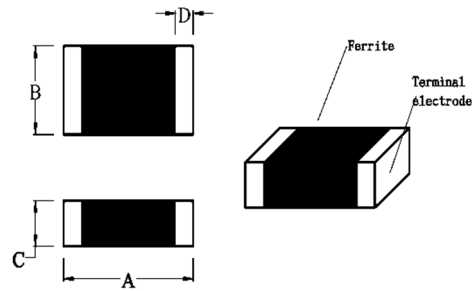
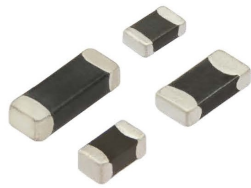


# Ferrite Beads SMD

## CJB series

### ■ Dimensions

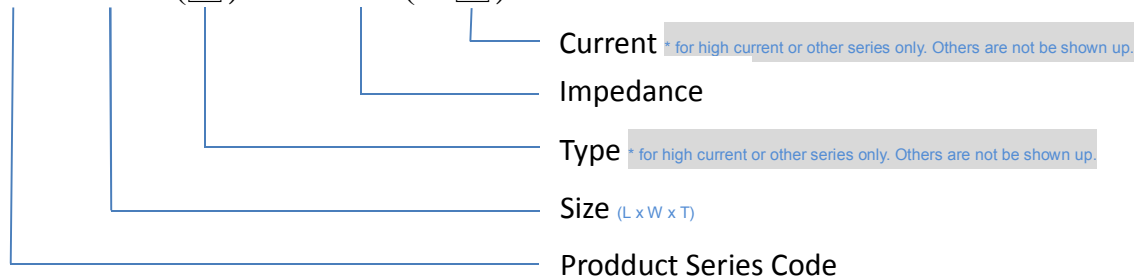


mm

No	Part No.	A	B	C	D
1	CJB 060303 (0201)	0.6 ± 0.03	0.3 ± 0.03	0.3 ± 0.03	0.1 ~ 0.2.
2	CJB 100505 (0402)	1.0 ± 0.1	0.5 ± 0.1	0.5 ± 0.1	0.1 Min.
3	CJB 160808 (0603)	1.6 ± 0.2	0.8 ± 0.2	0.8 ± 0.2	0.3 ± 0.2
4	CJB 201209 (0805)	2.0 ± 0.2	1.2 ± 0.2	0.9 ± 0.2	0.5 ± 0.3
5	CJB 321611 (1206)	3.2 ± 0.2	1.6 ± 0.2	1.1 ± 0.2	0.5 ± 0.3
6	CJB 322513 (1210)	3.2 ± 0.2	2.5 ± 0.2	1.3 ± 0.2	0.5 ± 0.3
7	CJB 451616 (1806)	4.5 ± 0.2	1.6 ± 0.2	1.6 ± 0.2	0.5 ± 0.3
8	CJB 453215 (1812)	4.5 ± 0.2	3.2 ± 0.2	1.5 ± 0.2	0.5 ± 0.3

### ■ Part Number System

CJB 100505 (□) – 300 (/ □)



### ■ PACKAGE

Type	CJB 060303	CJB 100505	CJB 160808	CJB 201209
QTY/Reel	15,000	10,000	4,000	4,000
Type	CJB 321611	CJB 322513	CJB 451616	CJB 453215
QTY/Reel	3,000	2,000	2,000	1,000

■ Standard CJB series

No.	Part No.	Impedance (Ω)	Test Frequency (MHz)	RDC (Ω)	IDC (mA)
1	CJB 060303-100	10 ± 25%	100	0.10	500
2	CJB 060303-300	30 ± 25%	100	0.30	300
3	CJB 060303-600	60 ± 25%	100	0.35	300
4	CJB 060303-121	120 ± 25%	100	0.45	200
5	CJB 060303-221	220 ± 25%	100	0.75	200
6	CJB 060303-241	240 ± 25%	100	0.80	200
7	CJB 060303-301	300 ± 25%	100	0.90	150
8	CJB 060303-331	330 ± 25%	100	0.90	150
9	CJB 060303-471	470 ± 25%	100	1.50	100
10	CJB 060303-601	600 ± 25%	100	1.50	100
11	CJB 100505-300	30 ± 25%	100	0.30	500
12	CJB 100505-600	60 ± 25%	100	0.40	200
13	CJB 100505-121	120 ± 25%	100	0.50	200
14	CJB 100505-221	220 ± 25%	100	0.70	100
15	CJB 100505-301	300 ± 25%	100	0.80	100
16	CJB 100505-601	600 ± 25%	100	1.10	50
17	CJB 160808-090	9 ± 25%	100	0.20	500
18	CJB 160808-300	30 ± 25%	100	0.20	400
19	CJB 160808-600	60 ± 25%	100	0.20	300
20	CJB 160808-800	80 ± 25%	100	0.20	300
21	CJB 160808-121	120 ± 25%	100	0.20	200
22	CJB 160808-221	220 ± 25%	100	0.20	200
23	CJB 160808-301	300 ± 25%	100	0.35	200
24	CJB 160808-451	450 ± 25%	100	0.40	200
25	CJB 160808-601	600 ± 25%	100	0.45	200
26	CJB 160808-102	1000 ± 25%	100	0.60	100
27	CJB 201209-110	11 ± 25%	100	0.15	600
28	CJB 201209-300	30 ± 25%	100	0.10	300
29	CJB 201209-800	80 ± 25%	100	0.15	300
30	CJB 201209-121	120 ± 25%	100	0.25	300
31	CJB 201209-151	150 ± 25%	100	0.25	300
32	CJB 201209-221	220 ± 25%	100	0.30	200
33	CJB 201209-301	300 ± 25%	100	0.30	200
34	CJB 201209-601	600 ± 25%	100	0.35	200
35	CJB 201209-102	1000 ± 25%	100	0.45	200
36	CJB 321611-310	31 ± 25%	100	0.20	500
37	CJB 321611-600	60 ± 25%	100	0.30	400
38	CJB 321611-900	90 ± 25%	100	0.30	300
39	CJB 321611-151	150 ± 25%	100	0.30	300
40	CJB 321611-301	300 ± 25%	100	0.30	300
41	CJB 321611-601	600 ± 25%	100	0.30	200
42	CJB 321611-102	1000 ± 25%	50	0.35	350
43	CJB 321611-202	2000 ± 25%	30	0.60	100
44	CJB 322513-600	60 ± 25%	100	0.30	400
45	CJB 322513-900	90 ± 25%	100	0.30	300
46	CJB 451616-800	80 ± 25%	100	0.30	400
47	CJB 453215-131	130 ± 25%	100	0.30	300

■ High current CJB series

No.	Part No.	Impedance (Ω)	Test Frequency (MHz)	RDC (Ω)	IDC (mA)
1	CJB 100505A-100/2	10 ± 25%	100	0.030	2000
2	CJB 100505A-300/3	30 ± 25%	100	0.030	3000
3	CJB 100505A-121/1.2	120 ± 25%	100	0.090	1200
4	CJB 100505A-121/2	120 ± 25%	100	0.055	2000
5	CJB 160808A-600/3	60 ± 25%	100	0.040	3000
6	CJB 160808A-121/2.5	120 ± 25%	100	0.100	2500
7	CJB 160808A-301/2	300 ± 25%	100	0.150	2000
8	CJB 160808A-601/1	600 ± 25%	100	0.300	1000
9	CJB 201209A-300/3	30 ± 25%	100	0.030	3000
10	CJB 201209A-600/3	60 ± 25%	100	0.040	3000
11	CJB 201209A-800/3	80 ± 25%	100	0.040	3000
12	CJB 201209A-121/3	120 ± 25%	100	0.060	3000
13	CJB 201209A-221/2	220 ± 25%	100	0.100	2000
14	CJB 201209A-301/2	300 ± 25%	100	0.100	2000
15	CJB 201209A-601/2	600 ± 25%	100	0.150	2000
16	CJB 321611A-310/6	31 ± 25%	100	0.010	6000
17	CJB 321611A-500/3	50 ± 25%	100	0.030	3000
18	CJB 321611A-800/3	80 ± 25%	100	0.050	3000
19	CJB 321611A-121/3	120 ± 25%	100	0.080	3000
20	CJB 321611A-301/2.5	300 ± 25%	100	0.080	2500
21	CJB 321611A-601/2	600 ± 25%	100	0.100	2000
22	CJB 322513A-300/3	30 ± 25%	100	0.050	3000
23	CJB 322513A-600/3	60 ± 25%	100	0.050	3000
24	CJB 451616A-600/6	60 ± 25%	100	0.010	6000
25	CJB 451616A-750/3	75 ± 25%	100	0.025	3000
26	CJB 451616A-800/3	80 ± 25%	100	0.050	3000
27	CJB 453215A-700/6	70 ± 25%	100	0.030	6000